

# Greater Lexington Newcomers

**EDITORS:** Jan and Mike White - [mwhite@ntelos.net](mailto:mwhite@ntelos.net) 261-2119

**WEB SITE:** Dorothy Coker [www.lexvanewcomers.org](http://www.lexvanewcomers.org)

Meetings are held at 10:00 am on the first Wednesday of the month. October meeting is at LGCC

## Membership Dues

Membership dues for the year 2008/2009 must be received by September 30th in order for you to be included in the Newcomers' Membership Directory which will go to print in early October. If you have not already paid, and wish to remain a member of the Newcomers' Club, you should send a check for \$20.00, made payable to the Greater Lexington Newcomers' Club, to Jim Slack, Membership Chairman, 305 New Cameron Drive, Lexington, VA 24450. **PLEASE DO IT TODAY!**

## Activities

### Fall Foliage Cass Railway Outing Planned for Initial Outing



It is usually the case that the initial Newcomer Club outing for the new season takes place in September, and this year's first trip almost made it. However, since the Cass Railway is already heavily booked for the last days of the month, this year our first offering will take place on October 7<sup>th</sup>, a perfect time for fall foliage, cooler temperatures, and most important, space on the train...if we proceed quickly. This is an opportunity to see nature at its finest and also experience a bit of West Virginia history both in the partially restored town of Cass and, of course, on a train powered by a restored locomotive of at least 100 years in age. Here is what we have planned:

Depart: 8:00 am on Tuesday, October 7 from the parking lot behind Peebles (adjoining the recycling center). We will car pool for those interested.

Arrive: 10:30 at Cass West Virginia for an 1100 departure for Bald Knob, one of the highest points in West Virginia, on board an historic Shay engine-powered railroad. The rail trip takes about 4½ hours including a stop for lunch on Bald Knob.

Bring: A picnic lunch small enough to fit under a rail seat and something non-alcoholic to drink. (The rail installation is a West Virginia State Park facility.)

Cost: \$31 per person for an enclosed car; \$27 for an open car. Seats on the former are extremely limited and just a few have been purchased. Seating on the open cars is still good but is not guaranteed to remain so, and is first-come, first-seated even if you have purchased a ticket. The initial block of tickets for the enclosed car will not last long, and ticket purchases after that must be made directly using the website below.

Depart: 4:00 from Cass, to arrive back at Lexington about 6:00  
Please refer to the Cass website [www.cassrailroad.com](http://www.cassrailroad.com) for a complete description of the operation and facilities. Call Ed Bauer at 463.2018 for additional information as needed and to sign up for the trip.

## Calendar

*See Activities or Interest Groups for details.*

### September

- 3 General meeting @ 10:00 am
- 5 Hiking
- 9 Bridge #2 @ 12:00 pm
- 11 Bridge #1 @ 1:00 pm
- 12 Hiking
- 15 Book Group #2 @ 1:30 pm
- 17 Couples' Bridge @ 7:00 pm
- 19 Hiking
- 21 Oktoberfest @ 4 pm
- 23 Scrabble @ 1:00 pm
- 25 Book Club #3 @ 1:00 pm
- 26 Hiking
- 27 Canasta @ 12:00 pm

### October

- 1 General meeting @ 10:00
- 3 Hiking
- 7 Cass Railway Outing
- 9 Bridge # 1 @ 1:00 pm
- 10 Hiking
- 12 Garth Newel Concert
- 14 Bridge # 2 @ 12:00 pm
- 15 Couples Bridge @ 7:00 pm
- 17 Hiking
- 20 Book Club # 2 @ 1:30 pm
- 23 Book Club #3 @ 1:00 pm
- 24 Hiking
- 31 Hiking

### November

- 5 General meeting @ 10:00 am
- 14 Floyd, VA Outing

## New President's Message

### Club Officers

*President*  
Shelley Undercoffer

*Vice President*  
Kathy Kvach

*Corresponding Secretary*  
Terrie Scholl

*Treasurer*  
Rosemary Cecil

*Past President*  
Mary Brooks

### Committee Chairs

*Activities*  
Mary and Mike Quarles

*Directory*  
Debbie and Alan Mauer

*Historian*  
Carole Elmore

*Hospitality*  
Elaine Nelson

*Membership*  
Jim Slack

*Newsletter*  
Jan & Mike White

*Publicity*  
Fred Massey

*Web Site*  
Dorothy Coker

*Welcome*  
Cynthia Tucker



Dear Newcomers,

Welcome to the 16<sup>th</sup> year of the Greater Lexington Newcomers! It was wonderful seeing so many members at our first meeting of the year. The location at the Lexington Golf and Country Club was perfect. Who could ask for more: Air Conditioning, Spaciousness, Caring Staff and Management, as well as a Great View! This year looks like another good one filled with new activities; Oktoberfest, Cass Train Ride and Trip to Floyd just to name a few. If you have any ideas you would like to suggest, be sure and touch base with the committee chairs. I am thrilled with the enthusiasm of the various committees and the new board. As is our custom after each meeting, we had a terrific lunch prepared by the Chef and his staff at the Country Club. They even arranged for a tray of complimentary cookies for dessert. I have to admit, I indulged and they were delicious. We will continue to plan for lunch at different venues in the area and will definitely return to the Club.

Thank you to all of our past officers, committee chairs and volunteers. All of you that have not had a chance to volunteer in one capacity or another please get involved and help make this your club! See you all next month. This will be a **GREAT** year for **The Greater Lexington Newcomers!**

Shelley Undercoffer, President

## Upcoming Activities

### Oktoberfest

On Sunday, September 21, the Wine Club is holding their annual event. This year we are celebrating with an Oktoberfest. This party is open to all Lexington Newcomers but reservations are required. Please join us for a great afternoon of food, fun and friends.

Delicious German food will be provided by Maggi George, the chef and owner of *The House on Main Street*. Her recipes are from her German grandmother and include roasted chicken, bratwurst, Bavarian sauerkraut, and more. We will be sampling German wines and beers, provided by *Uncorked*. Each person will receive four (4) drink tickets along with their meal.

The Party will be held at VMI's McKethan Park, which is located on Old Buena Vista Road, a very short drive from town. Directions will be provided.

The date is Sunday, September 21, 2008 from 4:00 - 7:00 p.m. Space is limited so get your reservations in early.

The cost is \$25 per person. Please contact Kate Jenks at 463-4722 or email [katejenks@comcast.net](mailto:katejenks@comcast.net) to sign up. Checks should be made out to "Kate Jenks" and mailed to her at 212 Buckland Dr. Lexington VA 24450. Thank you. We hope to see you there.



### A Sunday Afternoon at Garth Newel Music Center

When: Sunday, October 12, 2008

What: A 3 pm concert at the Garth Newel Music Center. The Garth Newel piano quartet will be performing Shostakovich, Brahms, and Faure. (You can check the [garthnewel.org](http://garthnewel.org) website for details.) Please note that a ticket guarantees you a seat, but there is *no reserved seating* at Garth Newel; however, it's a relatively small venue and there aren't really any "bad" seats. For those who wish to enjoy brunch/lunch before the concert, we will meet at the nearby Inn at Gristmill Square at 12:30 pm. (You can check the [gristmillsquare.com](http://gristmillsquare.com) website for more information.) Because this is a busy (fall foliage)

weekend, the restaurant can probably only accommodate 12 of us. If we have more than 12, we will have a second group at the Casino Club (at the Homestead's old golf course near the main building).

Cost: Concert tickets are \$20 per person; if we have 10 or more attendees, we receive a \$3 per ticket discount. Entrees at the Inn at Gristmill Square are in the \$10-\$13 range. Entrees at the Casino Club are in the \$14-\$18 range.

Directions: From Lexington, take I-64W to exit 16; follow signs for U.S. 220 North; take 220 north about 25 miles to Hot Springs, where you will see the Homestead Resort. Continue north on Rt. 220 about 3 miles to the Garth Newel entrance on your right. The Inn at Gristmill Square is about 1 1/2 miles north of Garth Newel in Warm Springs. Take the first left in Warm Springs on Courthouse Road (Route 619) and go about 500 yards to the Inn on your right. (See websites for more/alternate directions.) Allow about 75 minutes to drive to the restaurant/concert sites from Lexington.

Signing up: Please let Sue Whitsitt ([whitsitt@ntelos.net](mailto:whitsitt@ntelos.net); 540-463-6162) know if you would like to attend the concert, whether you wish to go to a restaurant before the concert, and whether you are interested in carpooling (either as a passenger or a driver). Payment of \$20 per person (checks payable to Sue Whitsitt) must be received **no later than October 1**. (Payments can be mailed to Sue at 20 High Meadow Drive, Lexington, 24450). **NO REFUNDS AFTER OCTOBER 1**. If we have enough attendees to qualify for the \$3 discount, you will receive a cash refund at the concert - and you will receive your ticket from Sue when you arrive at Garth Newel for the concert. (Please note: Sue will be out of town until Sept. 8 and again from Sept. 11-17, so you will not receive an e-mail or phone response from her during those times - but you can mail payments to her or leave e-mail or phone messages at any time.)

### **Spend a Day (and more) with the Newcomers in Floyd, Va.**

Floyd is developing a reputation as an art center of the Blue Ridge and is located approximately 40 miles southeast of Roanoke. Floyd County is the home of many artists and musicians and the town provides many venues to display their craft and perform their music.

The Bell Gallery and Garden, the Over the Moon Gallery, the Jackson Center for the Arts, Art Under the Sun, Wild fire Pottery, are just some of the galleries and artisan shops showcasing the works of local artists. Floyd offers live music five nights a week featuring bluegrass, blues, African drummers and jazz, and is the home of the Friday Night Jamboree at the Floyd Country Store where visitors begin gathering in mid afternoon to listen to the locals jamming and performing their own special renditions of bluegrass classics.

The food in Floyd is as eclectic as the talent with a choice of traditional Mexican, Mediterranean, Southwestern, vegetarian, as well as traditional southern country cooking. There are numerous dining opportunities in Floyd.

A short drive from Floyd are two fine wineries that offer tours and tasting, year round organic produce farms, and the historic attraction, Mabry Mill.

For those of us who enjoy shopping there are many clothing stores, artisan craft shops, antique stores and even The School House, a three story fabric store.

The Newcomer's Activities committee is planning an outing on Friday, November 14th when we can go and browse the sights at our leisure and then gather at the Country Store for the Friday Night Jamboree. For those wishing to make a late night of it or, in any case, spend more time in Floyd, we would suggest reservations at one of the local lodgings. There will be more details on this trip as they develop, but plan on joining this variety-filled, pleasurable outing during 14-15 November.

### **General Meeting**

The newcomers held their first meeting of the 16th year at the Lexington Golf and Country Club on September 3rd. President Shelley Undercoffer thanked manager, Steve Paige for setting up a comfortable meeting room. Newcomers' will meet there all this year. She then introduced the new officers. Kathy Kvach, Vice President, announced we had 44 members present and 3 visitors. They were Kathy Whitaker, Myra Young and Susanne Fitzgerald. The treasurer's report was given by Rosemary Cecil and Corresponding Secretary, Terrie Scholl said 8 cards were sent out since July. Shelley then presented the outgoing President, Mary Brooks with a gift certificate to the Potting Shed. Corresponding secretary, Sandy Harrelson and Treasurer, Margaret Skovira each received a potted mum for jobs well done.

Mike Quarles announced three activities for the months ahead, which were the Cass Railway, Garth Newell Concert and Floyd, VA get away. Jim Slack urged members to pay their dues by the end of September so they will be included in this year's directory. Kate Jenks reported on the Oktoberfest, Sept. 21 and the Dec. 7th Holiday Party. The door prize, a gift certificate to the Bistro, was won by Jim Kvach. General announcements were given and the meeting was adjourned. Lunch at the LGCC was enjoyed by 30 members.

## Interest Groups

Interest group participants must be members of Newcomers. To join an interest group, call or email the contact person.



### Fine Dining Group

Contact Nancy & Ron Patrick (463-7928),  
nbpatrik@earthlink.net, or refer to the  
website [www.lexvanewcomers.org/  
finedining.html](http://www.lexvanewcomers.org/finedining.html).

Fine Dining will resume in the fall with Ron and Nancy Patrick as the coordinators. All interested members must sign up whether or not you participated this year. For details as to how the group operates, please read the guidelines on the website under Interest Groups. You may sign up anytime between now and September 15th to be included in the first dining round for the 08-09 club year. There will be a sign-up sheet at the monthly meetings or you may email. Please include your 1<sup>st</sup> and 2<sup>nd</sup> choices of a dining round that you will host (Oct/Nov, Feb/ Mar, Apr/May).



### Dining Out

Contact Lynne & Gary Sullivan, 261-2826, or  
lynnsullivan@ntelos.net

According to my very informal survey, those people wanting September vs October are about "even Steven". So, if not too many people object, we will attempt a dining out mid September through mid October. That gives people a chance to return to Lexington after a lengthy vacation and I believe, will avoid the Parents' Weekends at the colleges.

This year, we will not attempt lunches as four were considered during this last year with very few people interested. We are still in need of hosts for the September/ October dinners. Please call.

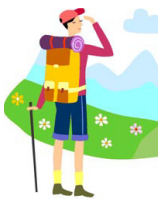


### Bridge

**Bridge #1** - 2nd Thurs of the month at 1 PM.

**Bridge #2** - Ellen Charske (463-7971), 2nd Tue of the month at Lexington Golf & Country Club. 12 Noon, Lunch (optional) .

**Couples Bridge #2** - Cathy Broach (261-3141) - 3rd Wed of the month at 7:00 PM - Substitutes welcome. Sept. 17 at Cathy & Bill Broach's. Oct. 15 at Nancy and Ron Patrick's.



### Hiking

If you are interested in hiking and not on the e-mail list contact Lucy Thornburgh, 434-922-7544 or bthorn@mindspring.com. We try to hike on most Friday mornings throughout the year, weather permitting.

Shown here are the club members who hiked Whetstone Ridge on Aug 15th. (Photo by Cynthia Tucker)



### Canasta

Contact Margaret Skovira, (348-1093), Call to join or substitute. Meets 12 noon, 4th Tuesday of every month. Sept. 23 at Margaret Skovira's.



### Wine Tasting Group

Website: [www.histomin.com/wineclub/pgindex.htm](http://www.histomin.com/wineclub/pgindex.htm)  
Contact Kate Jenks at 463-4722 or email her:  
katejenks@comcast.net with all your comments and suggestions.

Please see Oktoberfest article on page 2.



### Book Clubs

**Book Club #2** - Norma Combs (463-2745),  
nacombs@ntelos.net). 3rd Mon at 1:30 pm.

Sept. 15, *Water for Elephants* by Sara Gruen at home of Cathy Broach.

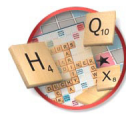
Oct. 20, *Pope Joan* by Donna Woolfolk Cross at home of Pam Wagner.

**Book Club #3** - Evelyn Caldwell (464-5571), ebcaldwell@embarqmail.com) - filled for now, 4th Thurs. of the month, 1 pm.

Sept. 25th *The Terroist*, 1 pm at Evelyn Caldwell's.

Oct. 23rd *As I Lay Dying*, 1pm at Suzanne King's.

Nov. 20th *Skinny Legs*, 1 pm at Lynne Sullivan's.



### Scrabble

**Scrabble #1** - Ellen Charske (463-7971), 3rd or 4th Thursday at 1 pm.

**Scrabble #3** - Frank Harrelson  
[fharrelson@embarqmail.com](mailto:fharrelson@embarqmail.com), (540) 261-1141.

4th Tuesday @ 1 pm. Sept.23 at Margaret Skovira's.



### Baseball

Contact Jerry Plante, jplante@ieee.org or 463-4032 to get on the email list. We attend Salem Avalanche games.





## Thinking of You

Frank and Sandy Harrelson - surgeries  
 George Grasse - surgery  
 Sandy Wilson - surgery  
 Ron Pierce - heart procedure  
 Blaine Cecil - heart procedure  
 Lynne Sullivan - illness  
 Margaret Skovera - support of daughter's accident

Members are requested to please keep **Terrie Scholl**, our new corresponding secretary, informed of any member to whom a card should be sent. Terrie can be reached by email at [teresalee@yahoo.com](mailto:teresalee@yahoo.com), or 540 -348-2402.

## Membership

Membership dues for 2008/2009 may be paid from now until September 30.

Checks for \$20.00 payable to Greater Lexington Newcomers Club may be mailed to Jim Slack, Membership Chairperson, at 305 New Cameron Drive, Lexington, VA 24450

As we begin our new membership year, 96 memberships have renewed so far. Our newest members are Janice and Bill Chappelle, 2979 Turkey Hill Rd., Rockbridge Baths, VA 24473, 540-348-6597 and Suzanne Fitzgerald, P.O. Box 214, Lexington, VA, 24450, 540-817-9431.

### Treasurer's Report

9/1/07 through 8/15/08

<b>BEGINNING BALANCE</b>		<b>\$3,135.44</b>
<b>INCOME</b>		
Dues	3,480.00	
Holiday Party	2,235.00	
Picnic Reservations	405.00	
<b>TOTAL Income</b>	<b>\$6,120.00</b>	
<b>EXPENSES</b>		
Directory	351.00	
Door Prize	269.23	
Gifts & Memorials	100.00	
Holiday Party 2007	3,578.52	
Holiday Party 2008	250.00	
New Member Coffee	155.59	
Newsletter	71.20	
Office Supplies	116.13	
Rent	962.32	
Special Events		
Art Show Reception	134.90	
Picnic	587.62	
<b>TOTAL Expenses</b>	<b>\$6,683.91</b>	
<b>ENDING BALANCE 6/27/2008</b>		<b>\$2,571.53</b>

Margaret Skovira  
 2007-2008 Treasurer

### Proposed Budget

2008-2009

<b>FUNDS AVAILABLE</b>		
Dues	3,200	
Carryover from last year	2,500	
<b>TOTAL Funds Available</b>		<b>\$5,700</b>
<b>EXPENSES</b>		
Board Party	50	
Directory	400	
Door Prize	300	
Gifts & Memorials	200	
New Member Coffee	300	
Newsletter	180	
Office Supplies	150	
Rent	1125	
Web Site	110	
Special Events		
Holiday Party	1,600	
Picnic	200	
Luncheon	200	
<b>TOTAL Expenses</b>	<b>\$4,865</b>	
<b>SURPLUS</b>		<b>\$835</b>

Rosemary Cecil  
 2008-2009 Treasurer