

# Greater Lexington Newcomers

**EDITORS:** Jan and Mike White - [mwhite@ntelos.net](mailto:mwhite@ntelos.net) 261-2119

**WEB SITE:** Dorothy Coker [www.lexvanewcomers.org](http://www.lexvanewcomers.org)

**Our next meeting will be at 10 a.m. on March 4 at LGCC.**



## President's Message

Dear Newcomers,

Happy February! January was pretty painless weather wise. Now I'm wondering why I allowed my college kids to go back to school before Winter was over. Needless to say I was shoveling my driveway and would have forgone the exercise gladly if they had been home. But it sure was pretty. The January meeting was well attended as was the February with the snow and ice. Thank you all for coming out. Please do not forget to sign up for the March Luncheon! If you know of a member who does not have e-mail or internet please let them know what is going on and encourage them to come out. Have a GREAT month, stay WARM and be SAFE.

Shelley Undercoffer

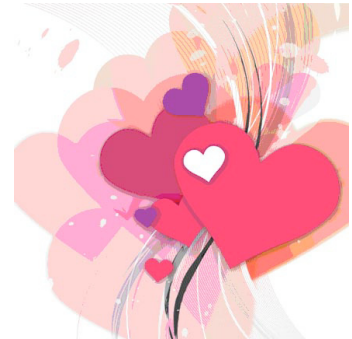
## Activities

### February Outing to the Virginia Transportation Museum

This month the Newcomers will visit the Virginia Transportation Museum in Roanoke. Its two main attractions are a locomotive and train exhibit, possibly the best in the East, and a classic automobile collection. In addition there is typically a selection of transportation-related art obtained from local collectors or galleries. The VTM is an example of often under-appreciated cultural attractions located in small towns and cities, displays which present artifacts and descriptive material of the highest quality and historical importance, but which may not have the "glitter" of fine arts offerings or entertainment centers. Plan to join us for a guided tour of this unique museum.

We will meet at 9:15 am on Thursday, February 12<sup>th</sup> at Stonewall Square (the old K-Mart parking lot also serving the Food Lion). Car pools will be organized at that time for those desiring to do so. We plan to enjoy lunch at any one of several excellent sites in downtown Roanoke following the museum visit. If the numbers so permit, we will get a group rate of a cost of approximately \$5.25 which includes the tour. The locomotives, railcars, and large hardware displays are located outside in covered but open areas, so dress warmly. Please call Mike or Mary Quarles at 463-5290 to sign up if you did not do so at the Newcomers meeting.

Mary & Mike Quarles



## Calendar

*See Activities or Interest Groups for details.*

### February

- 4 General meeting @ 10:00 am
- 6 Hiking
- 10 Bridge #2 @ 12:00 pm
- 12 VA Transportation Museum
- 13 Hiking
- 16 Third Mon. Book Group @ 1:30 pm
- 18 Couples' Bridge #2 @ 7:00 pm
- 18 Scrabble #3 @ 1:00 pm
- 20 Hiking
- 24 Canasta @ 12:00 pm
- 26 Fourth Thur. Book Group @ 1:00 pm
- 27 Hiking

### March

- 4 General meeting @ 10:00 am
- 6 Hiking
- 10 Bridge # 2 @ 12:00 pm
- 13 Hiking
- 16 Third Mon. Book Group @ 1:30 pm
- 18 Couples Bridge @ 7:00 pm
- 20 Hiking
- 24 Canasta @ 12:00 pm
- 26 Fourth Thur. Book Group @ 1:30 pm
- 27 Hiking

## General Meeting - February, 2009

### Club Officers

*President*  
Shelley Undercoffer

*Vice President*  
Kathy Kvach

*Corresponding Secretary*  
Terrie Scholl

*Treasurer*  
Rosemary Cecil

*Past President*  
Mary Brooks

### Committee Chairs

*Activities*  
Mary & Mike Quarles

*Directory*  
Debbie & Alan Maurer

*Historian*  
Carole Elmore

*Hospitality*  
Elaine Nelson

*Membership*  
Jim Slack

*Newsletter*  
Jan & Mike White

*Publicity*  
Fred Massey

*Web Site*  
Dorothy Coker

*Welcome*  
Cynthia Tucker

The Greater Lexington Newcomers' Club general meeting was called to order at 10:45, Wed., Feb 4, 2009 by President Shelley Undercoffer. There were 41 members present along with three guests. They were Jacque and Joe Koury and Judith Wycoff. The vote of the membership was to have lunch at LGCC after the meeting. Corresponding Secretary, Terri Scholl and Treasurer Rosemary Cecil gave their respective reports (see last page).

Old business concerned the Luncheon to be held after the March general meeting on March 4, 2009. Chairman Ron Patrick announced that the club will subsidize this and the cost will be \$12 each (see menu below). Shelley said the only new business was the reservation made for the 2009 Holiday Party at Moody Hall.

Mike Quarles, activity co-chair gave a description of the February activity which is a trip to the VA Dept. of Transportation in Roanoke (details on page 1). He also reported how much everyone enjoyed the Taubman Art Museum. The next New Member Coffee will be held the end of March, according to Hospitality Chair, Elaine Nelson. Lynne Sullivan reported the next Dining Out Group dinners will take place in April. Shelley explained to the members how the Dining Out, Wine Tasting and Fine Dining Groups operated and encouraged all who are not participating to join. Kathy Kvach announced that a new book group was being formed and asked all who might be interested to sign up or call her.

Graham Undercoffer won a gift certificate to Cocoa Mill Chocolates as the door prize. After accepting it, he mentioned that it was Shelley's birthday tomorrow, so everyone joined in to sing "Happy Birthday" to her. After two general announcements of local community organizations Shelley adjourned the meeting and 18 members stayed for lunch at the LGCC.

## Announcements

### Newcomers March Luncheon

The March luncheon of Lexington Newcomers will be held at the Lexington Golf and Country Club, immediately following the regular meeting on March 4.

#### Menu

Soup and Salad Bar      Soup du Jour

Sliced Turkey, Ham and Roast Beef      Bread, Deli Cheeses, Tomato and Onion

Pasta Salad, Fresh Fruit Bowl Red Bliss Potato Salad, Garden Salad

Assorted Cookie Tray

Iced Tea and Coffee

Subsidized Price: \$12.00 (includes tax and gratuity)

Reservations: [nbpatrick@embarqmail.com](mailto:nbpatrick@embarqmail.com) or 463-7928  
no later than Friday, Feb. 27

### New Book Club

A new book club will be opening up soon. Please call Kathy Kvach – 463-5191, [Jandk30@aol.com](mailto:Jandk30@aol.com), or sign up at the next general meeting.

## Interest Groups

Interest group participants must be members of Newcomers. To join an interest group, call or email the contact person.



### Fine Dining Group

Contact Connie and Ross Schmoll 463-7338, [rschmoll@comcast.net](mailto:rschmoll@comcast.net) or refer to the website, [www.lexvanewcomers.org/finedining.html](http://www.lexvanewcomers.org/finedining.html)

Fine Dining is doing well. Our first round of dinners in the fall had sixteen participants which translates into two parties. The Donalds and Schmolls were hosts. We are now starting our second round for the February-March period and we have grown. Someone must have heard about all the fun and good food! We now have thirty-two members and three couples to sub so we will have four dinner parties this round. Hosts this time will be Kathy and Jim Kvach, Mary Ellena Ward and Jim Slack, Debbie and Alan Mauer, and Nancy and Ron Patrick.

Contact persons are Connie and Ross Schmoll, 463-7338 or e-mail [rschmoll@comcast.net](mailto:rschmoll@comcast.net).



### Book Groups

**Third Monday Book Group** - Norma Combs (463-2745), [nacombs@ntelos.net](mailto:nacombs@ntelos.net). 3rd Mon at 1:30 pm.

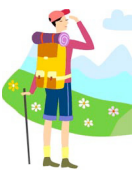
February 16, 2009, *The Sunday Philosophy Club* by Alexander McCall Smith at Carole Elmore's.

March 16, 2009, *Snow Flower and the Secret Fan* by Lisa See at Pat Rafferty's.

**Fourth Thursday Book Group** - Evelyn Caldwell (464-5571), [ebcaldwell@embarqmail.com](mailto:ebcaldwell@embarqmail.com)) - filled for now, 4th Thurs. of the month, 1 pm.

Feb. 26, 1 pm at Cynthia Tucker's, *Skinny Dip*.

March 26th at Ron Patrick's, *The Brief Wondrous Life of Oscar Wao*.



### Hiking

Lucy Thornburgh [bthorn@mindspring.com](mailto:bthorn@mindspring.com)  
We try to hike most Friday mornings throughout the year, weather permitting. "New hikers of all levels are welcome." Contact Norma Combs [nacombs@ntelos.net](mailto:nacombs@ntelos.net), 463-2745 during Feb.



### Canasta

Contact Margaret Skovira, (348-1093, [mkskovira@embarqmail.com](mailto:mkskovira@embarqmail.com)), Call to join or substitute. Meets 12 noon, 4th Tuesday of every

month.

January 27 at Aline McKenna's.

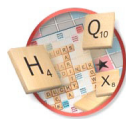


### Wine Tasting Group

Website: [www.histomin.com/wineclub/pgindex.htm](http://www.histomin.com/wineclub/pgindex.htm)  
Please contact Kate Jenks at [katejenks@comcast.net](mailto:katejenks@comcast.net) or 463-4722 with all your comments and suggestions.

Happy Valentine's Day to everyone. We are in the planning stages for our spring tasting. Gewurztraminer was recommended as a nice wine for spring. It's light and fruity and just right for the months ahead. I will be asking for hosts later in February, with the parties spread out through March.

A reminder – Kate had to reconstruct her email Group for the Wine Club. If you did not receive her test message please contact her. Thank you.



### Scrabble

**Scrabble #1** - Ellen Charske (463-7971), 3rd or 4th Thursday at 1 pm.

### Scrabble Group #3

Scrabble Group #3 will play at 1:00 PM on February 18<sup>th</sup> at the home of Frank & Sandy Harrelson in Buena Vista. Persons interested in playing on a regular basis or in being a substitute should contact Frank or Sandy at [fharrelson@embarqmail.com](mailto:fharrelson@embarqmail.com) or call them at 261-1141.



### Dining Out

Contact Lynne & Gary Sullivan, 261-2826, or [lynnsullivan@ntelos.net](mailto:lynnsullivan@ntelos.net)

The dining out club has several restaurants chosen for the February event. A record number of people have signed up so should be a lot of fun for all concerned. April will be the next month when people will meet at various restaurants. Gary and I are winding up our time as coordinators of this activity so if any of you think that you would like to take over in September, please let Shelley or Kathy know. We will of course will be happy to help out.



### Bridge

**Bridge #2** - Ellen Charske (463-7971), 2nd Tue of the month at Lexington Golf & Country Club. 12 Noon, Lunch (optional) .

**Couples Bridge #2** - Cathy Broach (261-3141) - 3rd Wed of the month at 7:00 PM - Substitutes welcome.

February 18 at Susan Bushnell/John Murphy's.

March 18 - Fran & Jim Naylor's.

## Thinking of You



**The Southern Inn** - Thank you  
**Debbie Mauer** - Sympathy  
**Ailine Mckenna** - Get Well

Members are requested to please keep **Terrie Scholl**, our corresponding secretary, informed of any member to whom a card should be sent. Terrie can be reached by email at [terreasalee@yahoo.com](mailto:terreasalee@yahoo.com), or 540-348-2402.



## Membership

Our newest membership is

Jacque and Joe Koury, 120 Shaner Hill Dr.,  
Lexington, VA 24450, 463-5333

This brings us to 158 memberships consist-  
ing of 275 people.



February scene in Lexington (Photo by Shelley)

## Treasurer's Report

9/1/2008 through 1/31/2009

<b>BEGINNING BALANCE</b>		<b>\$2,571.53</b>
INCOME		
Dues	3,125.00	
Holiday Party Reservations	2,160.00	
<b>TOTAL Income</b>		<b>\$5,285.00</b>
EXPENSES		
Holiday Party 2008	3,497.58	
Holiday Party 2009	250.00	
Directory	320.25	
Office Supplies	118.58	
Newsletter	144.00	
Rent	240.00	
Gifts and Memorials	25.00	
<b>TOTAL Expenses</b>		<b>\$4,591.41</b>
<b>ENDING BALANCE 1/31/2009</b>		<b>\$3,261.12</b>

Rosemary Cecil  
2008-2009 Treasurer

